

RETRW461 ARDMORE - WATERPROOF SHELL JACKET**REGATTA**
PROFESSIONAL

HYDRAFORT 5000

**CARACTERISTICI PRINCIPALE**200 g/m²**Fabric Information**

Waterproof Hydrafort 5000 coated peached polyester

Polyester mesh lined

Windproof fabric

Taped seams

Special Features

Concealed hood with adjuster

2 lower zipped pockets

1 internal pocket with earphone cord access

Adjustable cuffs

Adjustable shockcord hem

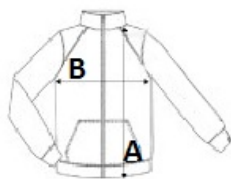
Internal zipped embroidery access

Tara de origine:

China

**SPECIFICAȚIE DIMENSIUNE (CM)**

	S	M	L	XL	2XL	3XL
Buc./🌀	16	16	16	16	16	16
Lungimea corpului (A)	76.50	76.50	79	79	81.50	81.50
Latimea pieptului (B)	53.50	57.50	61.50	65.50	70.50	74.50
Lungimea manecii (C)	67	68	69	70	71	72

**CULORI:**

Black/Classic Red
 Bottle Green/Seal Grey
 Majestic Purple/Seal Grey
 Navy/Classic Red
 Seal Grey/Black