

RETRA651 SANDSTORM - RIPSTOP SOFTSHELL



REGATTA
PROFESSIONAL



SOFTSHELL

WATERREPELLENT

CARACTERISTICI PRINCIPALE

290 g/m²

Fabric Information

Hardwearing warm backed woven stretch ripstop Softshell fabric

Durazone polyamide overlays at wear points for added strength and durability

AtI durable water repellent finish

Special Features

Reflective trim to front and back

Inner zip guard

Adjustable cuffs with rubber tabs

2 zipped lower pockets and 1 zipped chest pocket

Adjustable shockcord hem

Sugestii de personalizare:

Broderie, Transfer termic, Serigrafie

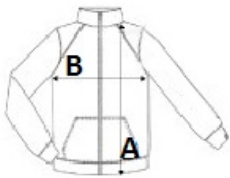
Tara de origine:

China



SPECIFICAȚIE DIMENSIUNE (CM)

	S	M	L	XL	2XL	3XL
Buc./🌀	16	16	16	16	16	16
Lungimea corpului (A)	69	71	74	74	76	76
Latimea pieptului (B)	53	56	58	62	66	70
Lungimea manecii (C)	79	80	81	83	84	86



CULORI:

Black
 Navy
 Seal Grey