

NS422 LADIES' ECO-FRIENDLY RAGLAN HOODED SWEATSHIRT **Nou**native  spirit**CARACTERISTICI PRINCIPALE**

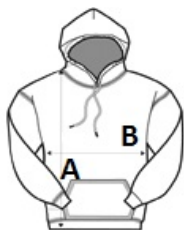
350 g/m²
 65 % organic cotton / 35 % post-consumer recycled polyester
 Ringspun combed cotton
 Regular fit with raglan sleeves
 Brushed 3-ply fleece, LSF (Low Shrinkage Fleece)
 Enzyme-washed
 Cover stitch on armholes, sides, bottom hem and cuffs
 Two side pockets
 Hood lined with main material
 1/2 circle in the back
 Flat drawstrings with recycled metal tips
 Jersey inner taped neck
 1 x 1 rib

Tara de origine:

Bangladesh

**SPECIFICAȚIE DIMENSIUNE (CM)**

	XS	S	M	L	XL
Buc./ 	20	20	20	20	20
Lungimea corpului (A)	61	63	65	67	69
Latimea pieptului (B)	47	50	53	56	59

**CULORI:**
 Ivory